



MECHVORA ENGINEERING WORKS



MECHVORA

ENGINEERING WORKS

Mfg. & Stockist Of :

**Your one-stop solution for SS & Brass Valve Fittings,
Compression Tube Fittings, Hydraulic Assemblies, and
Custom Engineering Products.**

**We do also Custom work as per your drawing with
precision and quality guaranteed**



Kaman, vasai(E) palghar, mumbai: 401208



8657359335



mechvora@gmail.com



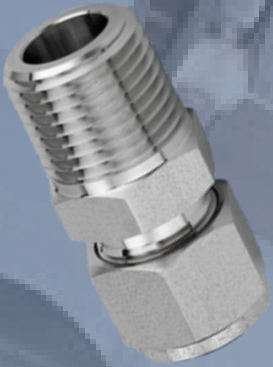
MECHVORA
ENGINEERING WORKS

PRECISION IN EVERY PART

MECHVORA

ENGINEERING WORKS



MALE CONNECTOR

| | |
|------------------------------|--|
| End Connections : | TOD x MPT |
| Tube OD Size (TOD) : | From 1/16" OD to 2" OD (Fractional) From 3mm OD to 38mm OD (Metric) |
| Male Pipe Thread Size (MPT): | 1/8" to 2" NPT (Taper) Threads (BSPP/ BSPT/ ISO/ Metric or any other types upon request) |
| Type : | Double ferrule design with nut (Single ferrule optional) |
| MOC : | SS316, 304/ Brass/ Alloy 400, 600, C276/ CS/ PTFE etc |
| Model No Designator (*) : | MOC*-MC-TOD*-MPT* |

MALE ELBOW 90 DEG

| | |
|------------------------------|--|
| End Connections : | TOD x MPT |
| Tube OD Size (TOD) : | From 1/8" OD to 1.5" OD (Fractional) From 3mm OD to 38mm OD (Metric) |
| Male Pipe Thread Size (MPT): | 1/8" to 1.5" NPT (Taper) Threads (BSPP/ BSPT/ ISO/ Metric or any other types upon request) |
| Type : | Double ferrule design with nut (Single ferrule optional) |
| MOC : | SS316, 304/ Brass/ Alloy 400, 600, C276/CS/ PTFE etc |
| Model No Designator (*) : | MOC*-ME-TOD*-MPT |

MALE ELBOW 45 DEG

| | |
|------------------------------|--|
| End Connections : | TOD x MPT |
| Tube OD Size (TOD) : | From 1/8" OD to 1.5" OD (Fractional) From 3mm OD to 38mm OD (Metric) |
| Male Pipe Thread Size (MPT): | 1/8" to 1.5" NPT (Taper) Threads (BSPP/ BSPT/ ISO/ Metric or any other types upon request) |
| Type : | Double ferrule design with nut (Single ferrule optional) |
| MOC : | SS316, 304/ Brass/ Alloy 400, 600, C276/CS/ PTFE etc |
| Model No Designator (*) : | MOC*-ME-TOD*-MPT |

MALE RUN TEE



| | |
|------------------------------|--|
| End Connections : | TOD x MPT x TOD |
| Tube OD Size (TOD) : | From 1/8" OD to 1.5" OD (Fractional) From 3mm OD to 38mm OD (Metric) |
| Male Pipe Thread Size (MPT): | 1/8" to 1.5" NPT (Taper) Threads (BSPP/ BSPT/ ISO/ Metric or any other types upon request) |
| Type : | Double ferrule design with nut (Single ferrule optional) |
| MOC : | SS316, 304/ Brass/ Alloy 400, 600, C276/ CS/ PTFE etc |
| Model No Designator (*) : | MOC*-MRT-TOD1*-MPT*-TOD2* |

MALE BRANCH TEE



| | |
|------------------------------|--|
| End Connections : | TOD x TOD x MPT |
| Tube OD Size (TOD) : | From 1/8" OD to 1.5" OD (Fractional) From 3mm OD to 38mm OD (Metric) |
| Male Pipe Thread Size (MPT): | 1/8" to 1.5" NPT (Taper) Threads (BSPP/ BSPT/ ISO/ Metric or any other types upon request) |
| Type : | Double Ferrule Design with Nut (Single Ferrule Optional) |
| MOC : | SS316, 304/ Brass/ Alloy 400, 600, C276/ CS/ PTFE etc |
| Model No Designator (*) : | MOC*-MBT-TOD1*-TOD2*-MPT* |

MALE BULKHEAD CONNECTOR



| | |
|------------------------------|--|
| End Connections : | TOD x MPT |
| Tube OD Size (TOD) : | : From 1/8" OD to 2" OD (Fractional) From 3mm OD to 38mm OD (Metric) |
| Male Pipe Thread Size (MPT): | 1/8" to 2" NPT (Taper) Threads (BSPP/ BSPT/ ISO/ Metric or any other types upon request) |
| Type : | Double ferrule design with nut (Single ferrule optional) |
| MOC : | SS316, 304/ Brass/ Alloy 400, 600, C276/ CS/ PTFE etc |
| Model No Designator (*) : | : MOC*-MBH-TOD*-MPT* |

MALE TUBE ADAPTER

| | |
|------------------------------|--|
| End Connections : | MPT X TPE |
| Tube OD Size (TOD) : | From 1/8" OD to 2" OD (Fractional) From 3mm OD to 38mm OD (Metric) |
| Male Pipe Thread Size (MPT): | 1/8" to 2" NPT (Taper) Threads (BSPP/ BSPT/ ISO/ Metric or any other types upon request) |
| Type : | Tube plain end suitable for swaging ferrules |
| MOC : | SS316, 304/ Brass/ Alloy 400, 600, C276/ CS/ PTFE etc |
| Model No Designator (*) : | MOC*-MTA-MPT*-TPE* |

FEMALE CONNECTOR

| | |
|------------------------------|--|
| End Connections : | TOD x FPT |
| Tube OD Size (TOD) : | From 1/16" OD to 2" OD (Fractional) From 3mm OD to 38mm OD (Metric) |
| Male Pipe Thread Size (MPT): | 1/8" to 1.5" NPT (Taper) Threads (BSPP/ BSPT/ ISO/ Metric or any other types upon request) |
| Type : | Double ferrule design with nut (Single ferrule optional) |
| MOC : | SS316, 304/ Brass/ Alloy 400, 600, C276/ CS/ PTFE etc |
| Model No Designator (*) : | MOC*-FC-TOD*-FPT* |

FEMALE ELBOW 90 DEG

| | |
|------------------------------|--|
| End Connections : | TOD x FPT |
| Tube OD Size (TOD) : | From 1/8" OD to 1.5" OD (Fractional) From 3mm OD to 38mm OD (Metric) |
| Male Pipe Thread Size (MPT): | 1/8" to 1.5" NPT (Taper) Threads (BSPP/ BSPT/ ISO/ Metric or any other types upon request) |
| Type : | Double ferrule design with nut (Single ferrule optional) |
| MOC : | SS316, 304/ Brass/ Alloy 400, 600, C276/ CS/ PTFE etc |
| Model No Designator (*) : | MOC*-FE-TOD*-FPT* |

FEMALE RUN TEE



| | |
|------------------------------|--|
| End Connections : | TOD x FPT x TOD |
| Tube OD Size (TOD) : | From 1/8" OD to 2" OD (Fractional) From 3mm OD to 48mm OD (Metric) |
| Male Pipe Thread Size (MPT): | 1/8" to 1.5" NPT (Taper) Threads (BSPP/ BSPT/ ISO/ Metric or any other types upon request) |
| Type : | Double ferrule design with nut (Single ferrule optional) |
| MOC : | SS316, 304/ Brass/ Alloy 400, 600, C276/ CS/ PTFE etc |
| Model No Designator (*) : | MOC*-FRT-TOD1*-FPT*-TOD2* |

FEMALE BRANCH TEE



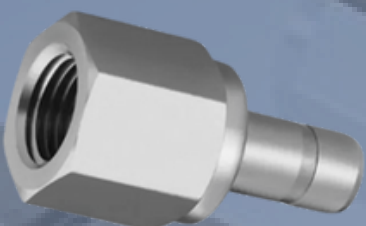
| | |
|------------------------------|--|
| End Connections : | TOD x TOD x FPT |
| Tube OD Size (TOD) : | From 1/8" OD to 1.5" OD (Fractional) From 3mm OD to 38mm OD (Metric) |
| Male Pipe Thread Size (MPT): | 1/8" to 1.5" NPT (Taper) Threads (BSPP/ BSPT/ ISO/ Metric or any other types upon request) |
| Type : | Double ferrule design with nut (Single ferrule optional) |
| MOC : | SS316, 304/ Brass/ Alloy 400, 600, C276/ CS/ PTFE etc |
| Model No Designator (*) : | MOC*-FBH-TOD1*-TOD2*-FPT* |

FEMALE BULKHEAD CONNECTOR



| | |
|------------------------------|--|
| End Connections : | TOD x FPT |
| Tube OD Size (TOD) : | From 1/8" OD to 1.5" OD (Fractional) From 3mm OD to 38mm OD (Metric) |
| Male Pipe Thread Size (MPT): | 1/8" to 1.5" NPT (Taper) Threads (BSPP/ BSPT/ ISO/ Metric or any other types upon request) |
| Type : | Double ferrule design with nut (Single ferrule optional) |
| MOC : | SS316, 304/ Brass/ Alloy 400, 600, C276/ CS/ PTFE etc |
| Model No Designator (*) : | MOC*-FBH-TOD*-FPT* |

FEMALE TUBE ADAPTOR



| | |
|------------------------------|--|
| End Connections: | FPT x TPE From 1/16" OD to 2" OD (Fractional) |
| Tube OD Size (TOD): | 3mm OD to 38mm OD (Metric) |
| Male Pipe Thread Size (MPT): | 1/8" to 2" NPT (Taper) Threads (BSPP/ BSPT/ ISO/ Metric or any other types upon request) |
| Type: | Tube Plain End suitable for swaging ferrules |
| MOC: | SS316, 304/ Brass/ Alloy 400, 600, C276/ CS/ PTFE etc |
| Model No Designator (*): | MOC*-FTA-FPT*-TPE* |

UNION TUBE STRAIGHT

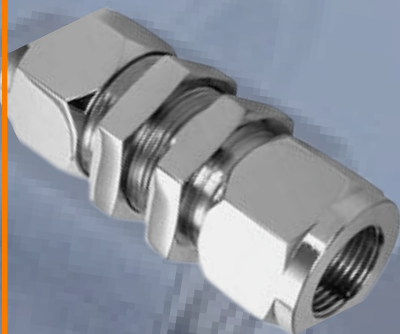


| | |
|---|---|
| End Connections : | TOD x TOD |
| Tube OD Size (TOD) : | From 1/6" OD to 2" OD (Fractional) From 3mm OD to 38mm OD (Metric) |
| Reducing Union of all combination available | |
| Type : | Double ferrule design with nut (Single ferrule optional) |
| MOC : | SS316, 304/ Brass/ Alloy 400, 600, C276/ CS/ PTFE etc |
| Model No Designator (*): | MOC*-U-TOD1*-TOD2* |

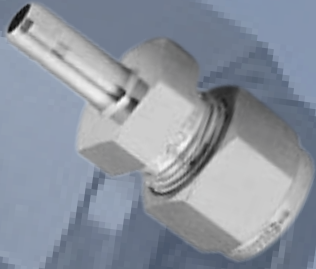
ELBOW UNION 90 DEG



| | |
|---|---|
| End Connections : | TOD XTOD |
| Tube OD Size (TOD) : | From 1/8" OD to 2" OD (Fractional) From 3mm OD to 38mm OD (Metric) |
| Reducing Union of all combination available | |
| Type : | Double ferrule design with nut (Single ferrule optional) |
| MOC : | SS316, 304/ Brass/ Alloy 400, 600, C276/ CS/ PTFE etc |
| Model No Designator (*): | MOC*-EU-TOD1*-TOD2* |

**TEE UNION
90 DEG****End Connections :****TOD x TOD xTOD****Tube OD Size (TOD) :****From 1/8" OD to 2" OD (Fractional) From
3mm OD to 38mm OD (Metric)****Reducing Union of all combination available****Type :****Double ferrule design with nut (Single
ferrule optional)****MOC :****SS316, 304/ Brass/ Alloy 400, 600, C276/
CS/ PTFE etc****Model No Designator (*) :****MOC*-TU-TOD1*-TOD2*-TOD3*****CROSS UNION****End Connections :****TOD x TOD x TOD x TOD****Tube OD Size (TOD) :****From 1/8" OD to 2" OD (Fractional) From
3mm OD to 38mm OD (Metric)****Reducing Union of all combination available****Type :****Double ferrule design with nut (Single
ferrule optional)****MOC :****SS316, 304/ Brass/ Alloy 400, 600, C276/
CS/ PTFE etc****Model No Designator (*) :****MOC*-CU-TOD1*TOD2*-TOD3*-TOD4*****BULK HEAD UNION TUBE****End Connections :****TOD x TOD****Tube OD Size (TOD) :****From 1/8" OD to 2" OD (Fractional) From
3mm OD to 38mm OD (Metric)****Reducing Union of all combination available****Type :****Double ferrule design with nut (Single
ferrule optional)****MOC :****SS316, 304/ Brass/ Alloy 400, 600, C276/
CS/ PTFE etc****Model No Designator (*) :****MOC*-BHU-TOD1*-TOD2***

REDUCER TUBE



End Connections :

TOD x TPE

Tube OD Size (TOD) :

From 1/8" OD to 2" OD (Fractional) From
3mm OD to 48mm OD (Metric)

Tube Plain End Size:

From 1/8" OD to 2" OD (Fractional) From
3mm OD to 38mm OD (Metric)

Type :

Tube Plain end suitable for swaging
ferrules

MOC :

SS316, 304/ Brass/ Alloy 400, 600, C276/
CS/ PTFE etc

Model No Designator (*) :

MOC*-RT-TOD*-TPE*

PIPE BUTT WELD CONNECTOR



End Connections :

TOD x PBW

Tube OD Size (TOD) :

From 1/8" OD to 2" OD (Fractional) From
3mm OD to 38mm OD (Metric)

Pipe Butt Weld End Size:

From 1/8" NB to 1.5" NB

Type :

Double ferrule design with nut (Single
ferrule optional)

MOC :

SS316, 304/ Brass/ Alloy 400, 600, C276/
CS/ PTFE etc

Model No Designator (*) :

MOC*-PBWC-TOD*-PBW*

END CLOSURE FOR TUBE



End Connections :

TOD

Tube OD Size (TOD) :

From 1/8" OD to 2" OD (Fractional) From
3mm OD to 38mm OD (Metric)

Type :

Double ferrule design with nut (Single
ferrule optional)

MOC :

SS316, 304/ Brass/ Alloy 400, 600, C276/
CS/ PTFE etc

Model No Designator (*) :

MOC*-ECT-TOD*

**END CLOSURE
FOR FITTING**

End Connections :
Tube OD Size (TOD) :

TOD
From 1/8" OD to 2" OD (Fractional) From
3mm OD to 38mm OD (Metric)

Type :

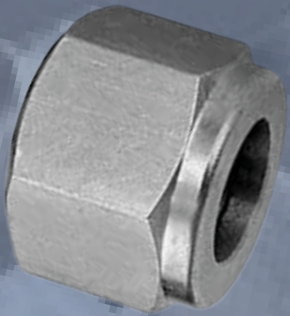
Double ferrule design with nut (Single
ferrule optional)

MOC :

SS316, 304/ Brass/ Alloy 400, 600, C276/
CS/ PTFE etc

Model No Designator (*) :

MOC*-ECF-TOD*

SPARE NUT

End Connections :
Tube OD Size (TOD) :

TOD
From 1/16" OD to 2" OD (Fractional) From
3mm OD to 38mm OD (Metric)

Type :

Spare nut double ferrule (for single
ferrule optional)

MOC :

SS316, 304/ Brass/ Alloy 400, 600, C276/
CS/ PTFE etc

Model No Designator (*) :

MOC*-SN-TOD*

SPARE FERRULE SET

End Connections :
Tube OD Size (TOD) :

TOD From 1/16" OD to 2" OD (Fractional) F
3mm OD to 38mm OD (Metric)

Type :

Spare nut double ferrule (for single
ferrule optional)

MOC :

SS316, 304/ Brass/ Alloy 400, 600, C276/
CS/ PTFE etc

Model No Designator (*) :

MOC*-SF-TOD*

ADDITIONAL PRODUCT RANGE

Products Complying Nace Specification

All Products in MOC SS316L & SS304L

Bore Through/ Thermocouple Connectors

Port Connector

O-Ring Seal Connector

Pipe/ Tube socket Weld Connectors

Gap Inspection Gauges

NEEDLE VALVE



| | |
|---|--|
| End Connections : | MPT /FPT |
| Tube OD Size (MPT/FPT) : | From 1/8" to 2" NPT (Taper) Threads (BSP/BSPT/ISO/ Metric or any other types upon request) |
| Needle Valve With panel mounting Arrangement on request | |
| Test Pressure: | Up to 10000 psi |
| Gland Packing: | Standard PTFE (Grafoil for high temp) |
| MOC | SS316, 304/ Brass/ Alloy 400, 600, C276/ CS/ PTFE etc |
| Model No Designator (*) : | MOC*-NV-IN*-OUT* |

NEEDLE VALVE TUBE X TUBE



| | |
|---|---|
| End Connections : | TOD x TOD |
| Tube OD Size (MPT/FPT) : | From 1/8" OD to 2" OD (Fractional) From 3mm OD to 38mm OD (Metric) |
| Needle Valve With panel mounting Arrangement on request | |
| Test Pressure: | Up to 10000 psi |
| Gland Packing: | Standard PTFE (Grafoil for high temp) |
| MOC | SS316, 304/ Brass/ Alloy 400, 600, C276/ CS/ PTFE etc |
| Model No Designator (*) : | MOC*-NV-IN*-OUT* |

PRESSURE RELIEF VALVE

| | |
|-----------------------------|--|
| End Connections: | TOD/FPT/MPT |
| Tube OD Size (TOD): | From 1/4" OD to 1° OD (Fractional) From 6mm OD to 25mm OD (Metric) |
| Pipe Thread Size (FPT/MPT): | 1/8" to 1" NPT (Taper) Threads (BSPP/ BSPT/ ISO/ Metric or any other types upon request) |
| set Pressure: | As Per Specification |
| Seal Ring: | Viton/Neoprene / Silicon |
| MOC: | SS 316, 304/Brass / Alloy 400, 600, C276 / CS etc |
| Model No Designator (*): | MOC*-PRV-IN*-OUT* |

QUICK RELEASE COUPLING

| | |
|------------------------------|--|
| End Connections : | TOD/FPT/MPT |
| Tube OD Size (MPT/FPT) : | From 1/4" OD to 1° OD (Fractional) From 6mm OD to 25mm OD (Metric) |
| Pipe Thread Size (FPT/MPT) : | 1/8" to 1" NPT (Taper) Threads (BSPP/ BSPT/ ISO/ Metric or any other types upon request) |
| Type : | Single Check Type / Double Check Type |
| MOC | SS 316, 304/Brass / Alloy 400, 600, C276 / CS etc |
| Model No Designator (*): | MOC*-QRC-IN-OUT* |

SWIVEL ADAPTOR

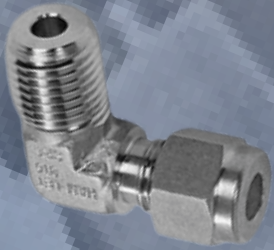
| | |
|--|--|
| Used For Fixing Position of Component (Pressure Gauge / Valve etc) Without Rotating Component itself | |
| Male End Conn. | 1/8" to 1" NPT (Taper) Threads (BSPP/ BSPT/ ISO/ Metric or any other types upon request) |
| Female Swivel Conn. | Parallel Threads (BSPP/ISO/METRIC/NPS etc) |
| Type | Sealing with Rubber O-Ring (Viton/Neoprene / Silicon) |
| MOC : | SS 316, 304/Brass / Alloy 400, 600, C276 / CS etc |
| Model No Designator (*): | MOC*-SWA-MPT*-FPT* |

HEXA PLUG



| | |
|-------------------------------|---|
| End Connections : | MPT |
| Male Pipe Thread Size (MPT) : | From 1/8" to 2" NPT (Taper) Threads (BSPP/ BSPT/ ISO/ Metric or any other types upon request) |
| Test Pressure : | Up to 10000 psi |
| Type : | Hexagonal. Square head plug upon request |
| MOC : | SS 316, 304 / Brass / Alloy 400, 600, C276 / CS / PTFE etc |
| Model No Designator (*) : | MOC*-HP-MPT* |

ELBOW MALE HEX



| | |
|-------------------------------|---|
| End Connections : | MPT X MPT |
| Male Pipe Thread Size (MPT) : | From 1/8" to 1.5" NPT (Taper) Threads (BSPP/ BSPT/ ISO/ Metric or any other types upon request) |
| Test Pressure : | Up to 10000 psi |
| Type : | Hexagonal. 90 Degree reducing elbows in all combination available. |
| MOC : | SS 316, 304/Brass / Alloy 400, 600, C276 / CS / PTFE etc |
| Model No Designator (*) : | MOC*-HEM-MPT1*-MPT2* |

TEE MALE HEX



| | |
|-------------------------------|---|
| End Connections : | MPT X MPT X MPT |
| Male Pipe Thread Size (MPT) : | 1/8" to 1.5" NPT (Taper) Threads (BSPP/ BSPT/ ISO/ Metric or any other types upon request) Reducing test in all combinations available. |
| Test Pressure : | Up to 10000 psi |
| MOC : | SS 316, 304/ Brass / Alloy 400, 600, C276 / CS / PTFE etc |
| Model No Designator (*) : | MOC*-HTM-MPT1*-MPT2*-MPT3* |

HEXA COUPLING



| | |
|-------------------------------|--|
| End Connections : | FPT X FPT |
| Male Pipe Thread Size (MPT) : | 1/8" to 2" NPT (Taper) Threads (BSPP/ BSPT/ ISO/ Metric or any other types upon request) |
| Test Pressure : | Up to 10000 psi |
| Type : | Hexagonal. Reducing hex couplings also available. |
| Length : | Standard short length (For specific length please inform) |
| MOC : | SS 316, 304 / Brass / Alloy 400, 600, C276 / CS / PTFE etc |
| Model No Designator (*) : | MOC*-HC-FPT1*-FPT2* |

HEX CAP



| | |
|---------------------------------|---|
| End Connections : | FPT |
| Female Pipe Thread Size (FPT) : | From 1/8" to 2" NPT (Taper) Threads (BSPP/ BSPT/ ISO/ Metric or any other types upon request) |
| Test Pressure : | Up to 10000 psi |
| Type : | Hexagonal. Reducing hex caps also available. |
| MOC : | SS 316, 304 / Brass / Alloy 400, 600, C276 / CS / PTFE etc |
| Model No Designator (*) : | MOC*-HCP-FPT* |

ELBOW FEMALE HEX



| | |
|---------------------------------|---|
| End Connections : | FPT X FPT |
| Female Pipe Thread Size (FPT) : | From 1/8" to 1.5" NPT (Taper) Threads (BSPP/ BSPT/ ISO/ Metric or any other types upon request) |
| Type : | Hexagonal. 90 Degree reducing elbows in all combinations available. |
| Test Pressure : | Up to 10000 psi |
| MOC : | SS 316, 304/ Brass / Alloy 400, 600, C276 / CS / PTFE etc |
| Model No Designator (*) : | MOC*-HTM-MPT1*-MPT2*-MPT3* |

TEE FEMALE HEX



| | |
|--------------------------------|--|
| End Connections : | FPT X FPT X FPT |
| Female Pipe Thread Size (FPT): | From 1/8" to 1.5" NPT (Taper) Threads (BSPP/ BSPT/ ISO/ Metric or any other types upon request) |
| Test Pressure : | Up to 10000 psi |
| MOC : | SS 316, 304/Brass / Alloy 400, 600, C276/CS/PTFE etc |
| Model No Designator (*) : | MOC*-HTF-FPT1*-FPT2*-FPT3* |

CROSS FEMALE HEX



| | |
|--------------------------------|--|
| End Connections : | FPT X FPT X FPT X FPT |
| Female Pipe Thread Size (FPT): | From 1/8" to 1.5" NPT (Taper) Threads (BSPP/ BSPT/ ISO/ Metric or any other types upon request) Reducing cross in all combinations available. |
| Test Pressure : | Up to 10000 psi |
| MOC : | SS 316, 304 / Brass / Alloy 400, 600, C276 / CS / PTFE etc |
| Model No Designator (*) : | MOC*-HCP-FPT* |

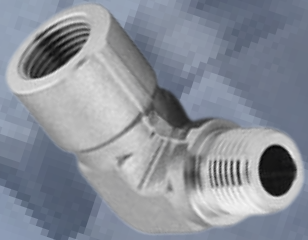
HEX REDUCER



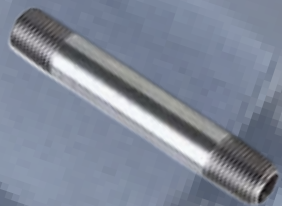
| | |
|----------------------------|--|
| End Connections : | MPT x FPT |
| Pipe Thread Size (MPT/FPT) | From 1/8" to 2" NPT (Taper) Threads (BSPP/ BSPT/ ISO/ Metric or any other types upon request) |
| Type | Hexagonal. All combinations available |
| Length | Standard short length (for specific length please inform) |
| Test Pressure : | Up to 10000 psi |
| MOC : | SS 316, 304/Brass / Alloy 400, 600, C276/CS/PTFE etc |
| Model No Designator (*) : | MOC*-HR-MPT*-FPT* |

HEXADAPTOR MALE X FEMALE

| | |
|-----------------------------------|--|
| End Connections : | MPT X FPT |
| Pipe Thread Size (MPT/FPT) | From 1/8" to 2" NPT (Taper) Threads (BSPP/ BSPT/ ISO/ Metric or any other types upon request) |
| Type | Hexagonal. All Combinations Available |
| Length | Standard short length (for specific length please inform) |
| Test Pressure : | Up to 10000 psi |
| MOC: | SS 316, 304 / Brass / Alloy 400, 600, C276 / CS / PTFE etc |
| Model No Designator (*) : | MOC-HA-MPT*-FPT* |

ELBOW MALE FEMALE HEX

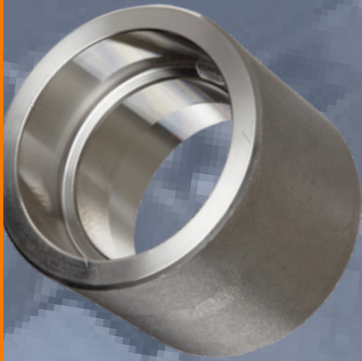
| | |
|-----------------------------------|---|
| End Connections : | MPT X FPT |
| Pipe Thread Size (MPT/FPT) | 1/8" to 1.5" NPT (Taper) Threads (BSPP/ BSPT/ ISO/ Metric or any other types upon request) |
| Test Pressure : | Up to 10000 psi |
| Type | Hexagonal. 90 Degree reducing elbows in all combinations available. |
| MOC : | SS 316, 304/Brass / Alloy 400, 600, C276 / CS / PTFE etc |
| Model No Designator (*) : | MOC*-HEMF-MPT*-FPT* |

PIPE NIPPLE

| | |
|------------------------------------|--|
| End Connections : | MPT/PLAIN |
| Male Pipe Thread Size (MPT) | 1/8" to 3" NPT (Taper) Threads (BSPP/ BSPT/ ISO/ Metric or any other types upon request) |
| Type | Pipe Nipple. Schedule / Threaded Both Ends (TBE), Threaded One End (TOE), Plain Both Ends (PBE). Length to be specified. Pipe Schedule / Thickness to be specified. |
| Length | Standard short length (for specific length please inform) |
| Test Pressure : | Up to 10000 psi |
| MOC: | SS 316, 304/Brass / Alloy 400, 600, C276/CS/PTFE etc |
| Model No Designator (*) : | MOC*-HR-MPT*-FPT* |

PIPE COUPLING SCREWED

| | |
|--------------------------------------|--|
| End Connections: | FPT X FPT |
| Female Pipe Thread Size (FPT) | From 1/8" to 2" NPT (Taper) Threads (BSPP/ BSPT/ ISO/ Metric or any other Types Upon Request) |
| Type | Round as per ANSI B16.11 Reducing coupling in all combinations available. |
| Pressure Class: | Up to 9000 psi |
| MOC: | SS 316, 304 / Brass / Alloy 400, 600, C276 / CS / PTFE etc |
| Model No Designator (*): | MOC*-PCS-FPT1*-FPT2*-CLASS |

PIPE COUPLING SOCKET WELD

| | |
|------------------------------------|---|
| End Connections : | SW X SW |
| Pipe Socket weld Size (PSW) | From 1/8" to 2" NB |
| Type | Round as per ANSI B 16.11 Reducing couplings in all combination. Socket weld to screwed coupling available upon request. |
| Pressure Class | Up to 9000 psi |
| MOC : | SS 316, 304/Brass / Alloy 400, 600, C276 / CS / PTFE etc |
| Model No Designator (*): | MOC*-HEMF-MPT*-FPT* |

PIPE ELBOW SCREWED/SW(PE)

| | |
|--------------------------------------|---|
| EndConnections: | FPT/SW |
| Female Pipe Thread Size (FPT) | 1/8" to 2" NPT (Taper) Threads (BSPP/ BSPT/ ISO/ Metric or any other types upon request) |
| Socket Weld Pipe Size(SW) | 1/8" to 3" NB |
| Type | Round as per ANSI B 16.11. |
| Pressure Class | Up to 9000 psi |
| MOC : | SS 316, 304 / Brass / Alloy 400, 600, C276 / CS etc |
| Model No Designator (*): | MOC*-PE-SIZE1*-SIZE2*-CLASS |

PIPE TEE SCREWED/SW (PT)



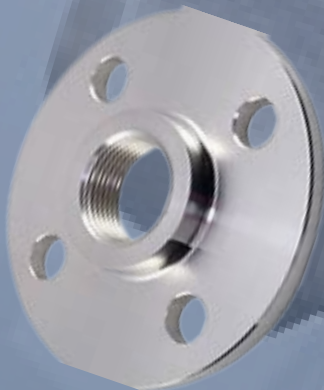
| | |
|-------------------------------|---|
| End Connections: | FPT/SW |
| Female Pipe Thread Size (FPT) | 1/8" to 2" NPT (Taper) Threads (BSPP/BSPT/ ISO/ Metric or any other types upon request) |
| Socket Weld Pipe Size(SW) | 1/8" to 3" NB |
| Type | Round as per ANSI B 16.11. |
| Pressure Class | Up to 9000 psi |
| MOC: | SS 316, 304 / Brass / Alloy 400, 600, C276 / CS etc |
| Model No Designator (*): | MOC*-PT-SIZE1*-SIZE2*-CLASS |

PIPE UNION SCREWED/SW (PU)



| | |
|----------------------------|---|
| End Connections : | FPT/SW/MPT |
| Pipe Thread Size (FPT/MPT) | 1/8" to 2" NPT (Taper) Threads (BSPP/BSPT/ ISO/ Metric or any other types upon request) |
| Socket Weld Pipe Size(SW) | 1/8" to 2" NB |
| Type | Hex. With Soft Seal (SS) or Metal to Metal Seal.(MM) |
| Pressure Class | Up to 9000 psi |
| MOC : | SS 316, 304 / Brass / Alloy 400, 600, C276/CS/PTFE etc |
| Model No Designator (*): | MOC*-PU-SEAL TYPE*-SIZE1*-SIZE2-CLASS |

FLANGES



| | |
|-----------------|--|
| Type | Socket Weld, Slip On, Weld Neck, Blind, Screwed |
| Special Flanges | With half coupling of reducing size welded at centre |
| Face Type | RF/FF/ Tongue & Groove Type |
| Class | 150 to 2500 class |
| Specification | ANSI B 16.5 |
| MOC : | SS316, 304/ Alloy 400, 600, C276/ CS/ AS etc. |



SNUBBER (SNB)

Pipe Thread Size (FPT)

1/8" to 1/2" NPT (Taper) Threads (BSPP/ BSPT/ ISO/ Metric or any other types upon request)

Type Test

Hexagonal. All combinations available

Pressure

Up to 6000 psi

MOC

SS 316, 304 / Brass / Alloy 400, 600, C276 / CS

Model No Designator
(*)

MOC*-SNB-INLET*-OUTLET*

HEX NIPPLE



End Connections :

MPT X MPT

Male Pipe Thread Size (MPT) :

From 1/8" to 2" NPT (Taper) Threads (BSPP/ BSPT/ ISO/ Metric or any other types upon request)

Test Pressure :

Up to 10000 psi

Length :

Standard short length (For specific length please inform)

Type :

Hexagonal. Reducing Nipple of all Combinations Available.

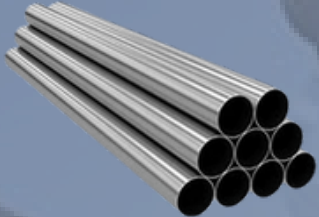
MOC :

SS 316, 304 / Brass / Alloy 400, 600, C276 / CS / PTFE etc

MOC*-HN-MPT1*-MPT2*




SS TUBING / IMPULSE TUBING SS PIPES



| | |
|-----------------|--|
| Tube Size | 1/16" OD to 2 OD |
| Pipe Size | 1/8" NB to 4" NB |
| Thickness/ Sch. | As Per Specification |
| Tube Grade | ASTM A 269/ ASTM A 213 (Soft Annealed) |
| Pipe Grade | ASTM A 312 |
| MOC | SS316, 304 /Alloy 400, 600, C276 / CS / AS etc |

PTFE TUBING / FITTINGS / VALVES



Range of Products Suitable for Highly Corrosive Applications
PTFE Tube Suitable For Compression Type Fittings
PTFE Compression Type Tube Fittings, With Nut/Ferrules.
PTFE Needle Valves: For Low Pressure Application
PTFE Manifold Valves: 2, 3 & 5 Valve. R/ T Type.
PTFE Pipe Fittings: Nipple, Plug, Coupling etc
PTFE Flanges
Test Pressure: Up to 150 psi

ADDITIONAL PRODUCT RANGE

ALL PRODUCTS IN MOC SS316L & SS304L
SCRD & SW FITTING COMPLETE RANGE (ANSI B 16.11)
BUTT WELD PIPE FITTINGS (ANSI B 16.9)
COPPER TUBE (BARE & WITH PVC INSULATION)
SS TUBE WITH PVC INSULATION
THEMOWELLS
PRECISION MACHINED PARTS AS PER DRAWING
O-RING FACE SEAL TYPE WELD FITTINGS & VALVES
HYDRAULIC HOSE & FITTINGS

| SIZE (Fractional) | TOD (*) For Inch | TPE(*) For Inch |
|----------------------|---------------------|--------------------|
| 1/16 Inch | 1 | 1Tx |
| 1/8 Inch | 2 | 2Tx |
| 3/16 Inch | 3 | 3Tx |
| 1/4 Inch | 4 | 4Tx |
| 5/16 Inch | 5 | 5Tx |
| 3/8 Inch | 6 | 6Tx |
| 1/2 Inch | 8 | 8Tx |
| 5/8 Inch | 10 | 10Tx |
| 3/4 Inch | 12 | 12Tx |
| 7/8 Inch | 14 | 14Tx |
| 1 Inch | 16 | 16Tx |
| 1-1/4 Inch | 20 | 20Tx |
| 1-1/2 Inch | 24 | 24Tx |
| 2 Inch | 32 | 32Tx |

Chart C

| SIZE (Metric) | TOD (*) For MM | TPE(*) For MM |
|------------------|-------------------|------------------|
| 3MM | 3MM | 3mmTx |
| 4MM | 4MM | 4mm |
| 6MM | 6MM | 6mmTx |
| 8MM | 8MM | 8mm |
| 10MM | 10MM | 10mmTx |
| 12MM | 12MM | 12mmTx |
| 14MM | 14MM | 14mmTx |
| 15MM | 15MM | 15mmTx |
| 16MM | 16MM | 16mm |
| 18MM | 18MM | 18mmTx |
| 20MM | 20MM | 20mmTx |
| 22MM | 22MM | 22mmTx |
| 25MM | 25MM | 25mmTx |
| 28MM | 28MM | 28mmTx |
| 32MM | 32MM | 32mmTx |
| 38MM | 38MM | 38mmTx |

Chart D

| SIZE (Fractional) | MPT (*) For Inch | FTP (*) For Inch | PSW (*) For Inch | PBW (*) For Inch |
|----------------------|---------------------|---------------------|---------------------|---------------------|
| 1/16 Inch | 1M | 1F | - | - |
| 1/8 Inch | 2M | 2F | 25W | 2BW |
| 1/4 Inch | 4M | 4F | 4SW | 4BW |
| 3/8 Inch | 6M | 6F | 6SW | 6BW |
| 1/2 Inch | 8M | 8F | 8SW | 8SW |
| 3/4 Inch | 12M | 12M | 12SW | 12BW |
| 1 Inch | 16M | 16F | 16SW | 16BW |
| 1-1/4 Inch | 20M | 20F | 20SW | 20BW |
| 1-1/2 Inch | 24M | 24F | 24SW | 24BW |
| 2 Inch | 32M | 32F | 32SW | 32BW |

| Material Grade | MOC(*) |
|----------------|--------|
| SS 316 | 1 |
| SS 316 L | 2 |
| SS 304 | 3 |
| SS 304 L | 4 |
| Brass | 5 |
| Alloy 400 | 6 |
| Alloy 600 | 8 |
| Alloy C276 | 10 |
| PTFE | 12 |
| Carbon Steel | 14 |

Note: For BSP Threads Prefix B & for BSPT Threads prefix BT before respective NPT Thread Designator under Chart C

HOW TO ORDER:

To Order: Male Connector 1/2" Tube OD x 1/2" NPT Male SS316

Use **TECHNIX ENGINEERS** Model: SS-MC-8-8M

Designator Details for above Model No.

"SS" : MOC Designator for Grade SS 316 as per above Chart D (Followed by a Dash)

"MC": Designator for Male Connector as per main heading of product in catalogue (Followed by a Dash)

"8": Designator for 1 1/2" Tube OD as per above Chart A (Followed by a Dash)

"8M": Designator for 1/2" NPT Male Threads as per above Chart C

Terms Used

"*" : Designator Code

"MM" Milli Meter

"TOD" Tube Outer Diameter

"TPE" Tube Plain End

"MPT": Male Pipe Thread (NPT)

"FTP": Female Pipe Thread (NPT)

"PSW": Pipe Socket Weld

"PBW": Pipe Butt Weld

"MOC": Material Of Construction

General Terms Used "OD" Outer Diameter of

Tube "NPT": National Pipe Threads " BSP "

British Standard Pipe Threads " BSPT "

British Standard Taper Threads " NACE "

National Association of Corrosion Engineers

"SW" Socket Weld " B W \ But Weld " psi "

Pounds per Square Inch

Dust Cap Colour Coding For Needle & Manifold Valves



Isolation

Drain

Equalizer

WHY CHOOSE US :-

- *Fast & Reliable Service – We value your time and ensure on-time delivery.*
- *Premium Quality Products – Only SS 304/316 and Brass materials are used.*
- *Custom Jobs as per Drawings – Precision manufacturing to meet your exact requirements.*
- *Competitive Pricing – Best quality at reasonable rates.*
- *Customer Satisfaction – We believe in long-term business relationships.*
- *Complete Range – From valve fittings to hydraulic assemblies – all under one roof.*

